



# The Angelus

Grace and Holy Trinity Cathedral • Kansas City, Missouri

Vol.80, No.7 • July 2011

## FROM THE PRIEST-IN-CHARGE

Seems that I spent much of June this year watching the Missouri River, wondering if indeed the water levels would rival those of 1993 in Kansas City. I confess I was oblivious to that flooding 18 years ago, but was profoundly aware of flooding on the Minnesota and upper Mississippi Rivers. In 1993, I was ordained to the diaconate at St. Mark's Cathedral in Minneapolis, and I recall having to strategize a route to the Cathedral using the few bridges and expressways that weren't closed.

That, of course, was in the dear dead days of long ago before GPS or MapQuest. For that matter, it was before widespread use of the internet and long before Facebook, smartphones and 24 hour news stations, to say nothing of the Weather Channel. I remember being dumbfounded at seeing firsthand the sheer destruction of the flooded Minnesota River valley between St. Peter (our hometown) and the Twin Cities. I had no idea it was so bad. Chicago, where we'd been living while I was in seminary, hadn't devoted a lot of airtime or newsprint to what they would have seen then as a regional inconvenience.

Everything is local now. Everything is immediate. We log on to the internet or turn on CNN and are immediately confronted by images of the disaster du jour. This is standard operating procedure for people in their teens, 20s and 30s. Those of us over 40 likely have a corporate memory of a time when it seemed like there were fewer natural disasters. There weren't. We simply were ignorant of most of them. But that ignorance — or perhaps, more gently termed innocence — is gone, and there's no going back. Our notion of "community" is broadened beyond anything we could have imagined 3 decades ago, to say nothing of 100 years ago.

We can respond to our experience of suffering through the lens of scarcity. This is a response that fears for one's own well-being, that retreats inward, that blames the victims for their misfortune or that points the finger and asks, "Why doesn't someone (else) fix this?" This is a response of self-preservation.

Or we can respond to our experience of suffering through the lens of abundance. This is a response that is confident of one's own well-being, that looks outward, that sees bonds of kinship with those who suffer, and that asks, "What can I do to help?" This is a response that reflects Baptismal vows practiced in real time.

None of us can do everything. All of us can do something. I have been enormously proud of the "something" undertaken by Cathedral members this spring and summer. Though we fell short of the stretch goal of \$25,000 to help rebuild the Cathedral in Haiti, we did raise nearly \$15,000

(including the matching grant monies from the Social Action Committee of the Cathedral). This is a robust contribution to an enormously important project in a profoundly impoverished diocese of the Episcopal Church. Many thanks to Geoff Logan for his leadership in this initiative, and to John Simpson for his valuable assistance, and to all who contributed. Well done!

In similar way, the response to the disaster in Joplin was amazing, and more opportunities will be coming our way. Diocesan Council just approved a three-part initiative whereby Episcopalians throughout the Diocese can reach out in tangible ways — an important ongoing witness in a world that by August will have moved on to the latest destructive hurricane or other natural disaster. Please jump to the back page to read more about these initiatives. In the upcoming weeks, I will be looking for parishioners to head up the Cathedral participation in these ventures.

And finally, we must not overlook the ongoing disaster of hunger in America. Since moving to their new location at 8th and Paseo, the Kansas City Community Kitchen has been serving record numbers of hot meals. And this, at a time, when food prices have skyrocketed and food availability through Harvesters has been limited. Food Prep teams, who volunteer one two-hour block of time per month, are being formed even as I write this. You need only a servant's heart and the capacity to be on your feet for two hours. You do not need full-blown culinary skills. Interested? See page 6 for more info.

—Sue+

**The Rule of Benedict:  
Insights for the Ages  
coming soon to the Cathedral!**



For more  
information,  
contact Deacon  
Jerry at 816-590-  
6205 or [jgrabher@  
ghkc-kc.org](mailto:jgrabher@ghkc-kc.org).

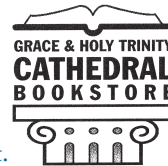
## Treasurer's Report

May MTD	Budgeted MTD	Actual MTD
Income	\$ 148,488	\$ 137,569
Expenses	\$ 127,663	\$ 140,720
<b>Net Total</b>	<b>\$ 20,825</b>	<b>\$ (3,151)</b>
May YTD	Budgeted YTD	Actual YTD
Income	\$ 573,541	\$ 563,867
Expenses	\$ 614,425	\$ 621,145
<b>Net Total</b>	<b>\$ (40,884)</b>	<b>\$ (57,278)</b>

For the month and year-to-date, pledge and plate are running behind budget. In comparison to last year, pledge, plate and the Crowell Trust are ahead of 2010, while the endowment income is below 2010. Overall, recurring income is ahead of 2010. On the expense side, property expenses are running ahead of budget by about \$13,700. For the year-to-date, expenses are running significantly below last year. The net operating income for the year-to-date is negative \$57,278 as compared to budget of negative \$40,884, and last year's negative \$54,754.

—by Jim Phillips, Treasurer

## Cathedral Bookstore sponsors t-shirt design contest



Ever thought about producing wearable art? Whether you are a doodler or designer, the GHTC Bookstore and Gift Shop needs your skills! Many have expressed interest in a GHTC t-shirt or sweatshirt, but we don't have one! That's where YOU come in: enter our design contest and see your art on GHTC apparel in our store!

We will be accepting design entries from all who would like to submit their idea(s) July 1–August 7, 2011. Entries will be presented to a panel of GHTC members and the winning design will be revealed at the Ministry Fair August 28.

You may enter more than one design; a separate entry form MUST accompany each submission. Entry forms are available at the GHTC Bookstore and Gift Shop, online at [www.ghtc-kc.org](http://www.ghtc-kc.org) or in the racks near the GHTC office entrance. There are no entry fees.

Interested in giving it a whirl? Please ensure your entry design:

1 - is original, creative artwork. It should not be in violation of a copyright, trademark

or privacy/publicity right.

It should not include any material that would require the consent of a third party for its use.

2 - is good quality. It should have clarity and be legible. Too much detail or lettering that is too small will be difficult to reproduce or be read by others.

3 - is appealing and appropriate for all to wear. Is this a design that most people would like to wear (ie. gender neutral)? Does it communicate a positive, Christian message about GHTC? Is it representative of our church and community?

4 - measures/fits on an 8 1/2" x 11" sheet of paper. This will ensure the design will not need to be shrunk or enlarged.

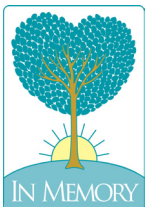
5 - requires 1-2 colors only. Our printing specifications limit us to two colors in order to keep the items affordable.

We will accept artwork for a front OR back design for a t-shirt. If you would like to submit a front AND back design, we recommend only a pocket size on the front.

More details are on the entry form. Questions? Contact Valerie in the bookstore or email us at: [bookstore@ghtc-kc.org](mailto:bookstore@ghtc-kc.org)

Thank you, in advance, for your time and talent!

—by Valerie Johnson



*Give to the departed eternal rest.  
Let light perpetual shine upon them.*

- Foster Burns, *Melisa Burns's brother; Patricia Burns's son*
- Rudolph Estevez, *Jeanne Estevez's brother-in-law*
- Kent Foster
- Sally Wood



## Wednesday, July 27

Café Grazia is a monthly gathering for all parishioners. You are cordially invited to join the fun, bring bread or a salad to share, and enjoy the fellowship. You might even want to stay and scope out one of the small group activities to see what they're up to.

**Dinner • 5:30 p.m.**

**Small Groups • 6:30 p.m.**

- The Seekers
- Inklings Book Group
- Charitable Needlework
- Reel People
- Youth Group: Eat together and then meet for games and conversation.

Remember to pray for the Dean Screening Committee and the Vestry/Dean Search Committee.



## The Angelus

*A laypersons' newspaper published in the interest of Grace and Holy Trinity Cathedral.*

*Regular Contributors:*

Friends of MN, Jan Frizzle, Chris Morrison  
Julie Toma, *Editor*

The Angelus Small Group is open to anyone interested in contributing (writing stories, taking photographs) regularly to *The Angelus*. No experience necessary.

Submissions from parishioners and small groups are welcome and encouraged. All entries are requested by the 15th day of the month prior to publication by e-mail to [communications@ghtc-kc.org](mailto:communications@ghtc-kc.org).

# MN continues to help the under-served

These days the news programs are filled with stories of disasters and appeals for help. Our national church is asking for financial donations to rebuild Holy Trinity Cathedral, and the adjacent schools (elementary, trade and music) and the Sisters of the Society of St. Margaret's convent. All are worthy causes and rebuilding the Holy Trinity complex is dear to my heart, as that is where I lived and worked for several years in the 1980s.

But I would also ask that in the midst of all this, we not forget the good work being done at Maison de Naissance, located in the south of Haiti. The southern part of Haiti was a long under-served area of the country, until Episcopal parishes in the Kansas City area began the partnership programs in the 1980s. Maison de Naissance came into being when it became obvious that it was an area of need not being addressed. Those are the kinds of things our church does.

We recently received a letter from Kyra Abbott, RN BSN, who has returned to work as a director at MN in Haiti after a two year absence. I quote some information from her letter:

"The clinical and administrative changes that have occurred in my absence are impressive. The level of professionalism and accountability has increased noticeably. Highlights include the donation of a new birthing table (see photo). The Haitian Ministry of Health representative who conducted an audit of MN's statistical reports stated that MN is one of the few health institutions to produce reports that correspond with its in-house registers and the only one to submit all 12 monthly reports and submit them on time. MN also welcomed a delegation from UNICEF who performed an evaluation of the quality of HIV care (voluntary counseling and testing plus prevention of mother-to-child transmission). They concluded that MN's programs were well run and had glowing compliments for the Center in general."

Kyra concludes with a "thank you" for our ongoing support and commitment and asks for our continued prayers.

—by Marian Philip



April 2011 Statistics  
*Women's reproductive health visits: 102*  
*Prenatal Visits: 557*  
*Postpartum Visits: 26*  
*Laboring Women: 53*  
*Deliveries: 47*  
*Urgent Labor Transfers/referrals: 6*  
*Well Baby Visits: 394*



**Maison de Naissance**  
 Delivering Healthy Mothers and Healthy Babies in Haiti



**Car Boot Sale**  
**July 23 • 9 a.m.—2 p.m.**

Watch the Cathedral website  
 and upcoming bulletins for more  
 information.

Sponsored by Brits International, Kansas City's British Club  
 We hope that the proceeds can go toward the proposed 2013 Trinity Choir tour.

## June flower gifts

### June 5

- in thanksgiving for the birthday of my mother, Constance Powell — Paula Livingston
- in thanksgiving for the April 2 baptism of our great grandson, Ford Shaffer Loeffler at Saint Gabriel, Charlotte, NC — Phyllis and Jim Shaffer
- in memory of Sally Kemper Wood — her sister, Jan Claire Kemper
- in memory of Sally Kemper Wood — her children and their families
- The candles this month are given in thanksgiving for the Gardening Guild.

### June 12

- in thanksgiving for the baptism of Tressa Louise Bowne and in memory of her great-grandmothers and our guardian angel cousin Natalie— Matthew Stephani and William Bowne and Robin Dellaguardia
- in loving memory of William P. Bucker — Barbara and Bob Bucker
- with love and thanksgiving for Carson August Walker Finet — Ruth Finet
- in memory of the birthday of my father, Edwin Fuhrman — Sharon Hudson

### June 19

- in memory of Dianne Logan — Geoff Logan
- in thanksgiving for the wedding of our daughter, Merideth Rice — David and Judy Rice
- in thanksgiving for Stephanie — Phyllis Biddle

### June 26

- in memory of my husband, William Coleman Branton — Shawsie Branton
- in loving memory of my parents, Harold and Betty Phillips — Marion Bowen and the Bowen family

To donate toward the flowers to celebrate a special event or remember a loved one, sign up online at [www.ghtc-kc.org/flowers](http://www.ghtc-kc.org/flowers) or contact the Cathedral office (816.474.8260 ext. 103 or [office@ghtc-kc.org](mailto:office@ghtc-kc.org)).

Join us for Summer  
 Children's Chapel  
 Sundays at 10:15 a.m.





# Should you plan for your own funeral?

The short answer to that question is yes, it's a good idea; but, the norm is people do not plan ahead for their own funeral. The Cathedral has a form to aid your funeral planning that may be completed now by you, but very adequate for the family or next of kin to use as a reference to provide a guide to a suitable funeral service. Consultation with clergy is essential here; and, Canon John Schaefer can offer an array of music suggestions.

Personally, I believe it is very helpful for your loved ones to have some idea of what you would like in a funeral service, and you can share your thinking verbally, in a written memorandum, or complete the Cathedral's form beforehand to provide guidance. Fortunately, the Book of Common Prayer Burial Office provides the necessary components for a proper church service and burial. All that needs to be done is to select the readings, music and whether friends or family will share memories about the deceased. If there is a military component, arrangements will have to be made for taps, flag presentation

and, possibly, rifle salute at the cemetery. Any special information you can provide to loved ones is helpful to them at a difficult time.

Some of us will know that the end is near. Fr. Joe Behen believes that planning your own funeral at this difficult time is a powerful aid in helping a person work through grief and helpful in confronting an uncertain future. We have had examples of this in the past few years. This is an opportunity to plan your service in detail, if you are able, leaving no doubt about what you want.

If the deceased is to be cremated, the Columbarium/Memorial Internment Garden at the Cathedral is available for members, their immediate family, including children and spouses, previous pledging members who have moved out of the Kansas City area and special requests approved by the Dean and Wardens. There is a \$980 cost for interment in the Garden and for the name engraved on the stone surrounding the Garden. Six names may be engraved on each plat. You may pay for this at any time to reserve a place.

One caveat: I strongly suggest that advanced planning be done by you if you are not married but have a long term, loving relationship with another person. There is always a chance of conflict with the next of kin who may have different ideas than you or your loved one. I also recommend advanced planning where it may be anticipated that family members or next of kin will not agree on important issues. For example, is the deceased to be buried with casket or cremated. In either case, leaving a written record of some kind could prove crucial in avoiding unnecessary conflict.

If you are motivated to plan now, the Cathedral's funeral planning guide is an excellent place to start. This form is available on our website or by contacting the Cathedral office. Detailed information about interment in the Memorial Garden may be obtained in the Cathedral office.

—by Chris Morgan, Health Ministry

## HEALTH NEWS

Your Health Ministry continues to work toward giving our parishioners the most current, helpful and correct information regarding their health and wellness. We will continue to include wellness articles for *The Angelus* with the objective of providing the most current information.

We had CPR classes for our ushers in May and plan to have another class in the fall to include CPR, first aid and fire safety. This training will be open to all parishioners.

Over the summer, we will continue to put together subject matters for monthly group meetings after Café Grazia dinners.

We met with the Rev. John Pumphrey, director of spiritual wellness for St. Luke's Health System. He has given us many sources to explore, including St. Luke's hospital, other Episcopal churches in the area and how we can assist our congregation.

Please, do not stay outside in the summer heat for long each day.

—Carol Montgomery, RN; Cindy Line, BSN, RN;  
Geoff Logan, MD; Chris Morgan, JD



## Thank you for supporting the 2011 AIDS Walk

Sixteen people from Grace and Holy Trinity Cathedral walked in the April 30 AIDS Walk-KC at Theis Park. The Cathedral walkers raised \$1270 for local HIV/AIDS charities and the Social Outreach Commission pledged to match the amount raised by the walkers so Grace and Holy Trinity donated \$2540 to the walk. Thanks to all who walked and donated!

The Episcopal Church was well represented in the walk—the Integrity Chapter from Grace Church in Liberty, Mo., and the Integrity Chapter from St. Michael and All Angels in Shawnee Mission, Kan., also had teams that participated.

AIDS Walk-KC is a benefit for HIV/AIDS agencies (Good Samaritan Project, SAVE Inc., Hope Care Center and Kansas City Free Health Clinic) in Kansas City.

—by Lenette Johnson



contributed photo

AIDS Walk teams from GHTC, Grace Church and St. Michael and All Angels posed for a picture before the walk and were led in prayer by the Venerable John McCann.

# “Mèsi.”

(Thank you.)

## Rebuild our Church in Haiti

Here's a big, shout out **THANK YOU** to all who bought bricks during the Rebuild Our Church in Haiti Campaign. Were it possible, I would write another Beatitude for you all. “Blessed are the altruistic, who have helped to build a new cathedral for fellow Episcopalians in a devastated country”. Charitable giving in such difficult economic times carries a special reward. Natural disasters happen on their own time schedule., without regard for our personal economic situation. “*Blessed is he who considers the poor; The Lord delivers them in the day of trouble. The Lord protects them and keeps them alive, they are called happy in the land.*” Psalm 41:1-2 New Annotated Oxford Bible

As we go to press with the July issue of *The Angelus*, the campaign is not yet over, and the total amount of money raised, in the Cathedral parish, is not yet available. Look for these figures in the August issue of *The Angelus*.

One of the more interesting parts of leading this campaign has been making contact with some in the Haitian Community, here in Kansas City. A key issue in Social Outreach, after the campaign is terminated, will be to maintain these contacts, and see what help we can offer

members of the Haitian Community in the near future. Thank you all again for your quiet generosity.

—Geoff Logan



photos by Chris Morrison

## MUSIC NOTES

from Canon Musician John Schaefer

The Cathedral's offering of extra music events is expanding a bit this summer. In addition to the Summer Music at the Cathedrals series in August, we are offering two events in July. On July 10 at 2 p.m., the Voices of Prometheus: an American Consort will present a concert in the nave. The ensemble, conducted by Dr. Paul Crabb of the University of Missouri in Columbia, is very much like the Simon Carrington Chamber Singers, except smaller. They will sing a wonderful program of sacred and secular music. The concert is a ticketed event: \$15 for adults and \$10 for seniors and students. The ensemble will sing at the 10:15 service and reduced price tickets will be available at coffee hour! Advance tickets can be purchased for \$10/\$7 online at [www.vopmusic.org](http://www.vopmusic.org).

One week later, July 17 at 2 p.m., our friend and colleague Richard Preis will present *The Gospel of Love According to Broadway* in the nave. Pastor Preis has brought together passages of scripture and songs from Broadway musicals; the presentation is artful, and Pastor Preis sings his songs very well. I will be accompanying him on the piano. He and I will ask those attending to make a donation for the concert. We hope that the proceeds can go toward the proposed 2013 Trinity Choir tour.



Voices of Prometheus: an American consort

contributed photo

I have repertoire information for both events.

Looking forward to August and Summer Music at the Cathedrals, I shall play a little organ recital August 7. I shall include music for organ alone, but also organ with instruments and voices. The Risebig sisters, Amy Waldron, Jonathan Krinke and Keith Benjamin will be my helpers. We'll request an at-door donation, again, we hope to benefit the tour fund.



# Looking for a way to serve? Join the altar guild

In gratitude we pray for all who have served faithfully on the Cathedral Altar Guild, currently and in the past, remembering especially Anita S. Hildreth. Grant us a renewed spirit of reverence for this ministry and all the work it undertakes.

The Altar Guild is a very special ministry, in caring

for the Altar, linens and vessels we become an active part of the liturgy and everyone is welcome to participate. If you are interested in joining this ministry, please contact Janet Sweeting at 816-361-3563 or [jssweeting@everestkc.net](mailto:jssweeting@everestkc.net).



## New clergy vestments dedicated for use



*New clergy vestments, given in memory of Harold and Betty Phillips, were blessed during the 10:15 service Sunday, June 26, 2011. Left: The Rev. Canon Sue Sommer blesses the new vestments, given in memory of Harold and Betty Phillips. Right: Our intrepid clergy models the new vestments.*



*photos by Chris Morrison*

## Cathedral hunger action teams forming

The Kansas City Community Kitchen is actively rebuilding its volunteer teams, and is reaching out to GHTC membership and friends first through the Cathedral's Social Outreach Commission. Even though the kitchen has moved to 8th and Paseo, the ties to this "Cathedral in the Heart of the City" continue to be strong. As such, we would like to give members of Grace and Holy Trinity Cathedral as many opportunities as possible to engage with this important ministry and the guests that we serve.

Service to the needy in downtown Kansas City continues to grow. In May alone, the Kansas City Community Kitchen served a record 13,935 meals, averaging 633 meals per day. This was our third straight month of serving more than 13,000 meals. Our record day for 2011 thus far, and for the history of the kitchen, is 805 meals! Perhaps most telling is the fact that the number of families and youth that we are serving has also increased dramatically.

Our greatest focus is for volunteer prep teams on Thursday evenings and Saturday mornings. The ideal prep team is five or more and, in this

larger kitchen, no prep team is too large. This opportunity to combine socializing and ministry in one setting is perfect for small groups at the church. Working once each month at their scheduled date and time, weekday prep teams can arrive anytime between 4 and 6 p.m. and typically work a couple of hours. The Saturday prep teams typically arrive between 9 and 10 a.m. and work two to three hours. Other days are also available.

Finally, we have strengthened our support to our prep teams. You always have one of our culinary staff on site — to greet you, to help guide you in tasks to be done, to help you find anything that you need in the kitchen, and to thank you and escort you to your car as you leave. We want to make this experience as meaningful and non-stressful as possible for both new volunteer teams and experienced ones.

Contact either Charmaine Fowler or Jackye Finnie to join (or get more info about) a Cathedral prep team. For additional volunteer opportunities — for individuals, for families, and for teams — contact Episcopal Community Services at 816-561-8920.

*—by John Hornbeck, Episcopal Community Services*

*Left: A youth volunteer team at the Kansas City Community Kitchen in June.*

*Right Photo: The Kansas City Community Kitchen at 8th and Paseo.*



*photos by John Hornbeck*



# Golf tournament raises money for Culinary Cornerstones



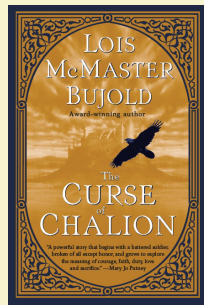
## Book Review

*The Curse of Chalion*

written by Lois McMaster Bujold

### Frighteningly real theology

Why talk about theology in terms of fiction literature? Why not talk about theology in biblical terms, and forget the fantastical? Well ... here's one answer: because story offers a refreshing challenge for us to name what we really believe, as well as how we live those beliefs. What difference do our beliefs make in our lives. Lois McMaster Bujold issues just such a potent challenge in her book, *The Curse of Chalion*.



Used by the world and spit out again, spent and forsaken, Cazaril finds unexpected redemption through his friendship with sixteen year-old Iselle. She is sharp-witted and idealistic; he is cautious and wise. After being given as Iselle's teacher and protector, Cazaril becomes reacquainted with who he could have been, and can now still become. When he tells young Iselle that, "Not all prisons are made of iron bars. Some are made of feather beds," he speaks of what he truly knows. Bujold refuses to talk down to the reader in this outstanding read, giving her characters refreshing nuance.

The religious world of Chalion is in many ways not unlike our own. It is sometimes used to serve individual goals at the expense of others, and sometimes the failure of courage to live one's beliefs has disastrous results. But it is very real — more real than most people will ever know. Cazaril finds out just how real, and finds his quest to be more than practical. It is simultaneously a spiritual journey.

At the center of Cazaril's struggle is the question of call — how can God be using him, when he himself is unaware? "Lately — we've redoubled our petitions to the gods for aid." "And how have the gods answered?" "It would seem — by sending you." Cazaril sat up in renewed terror, clutching his bedclothes. "No one sent me! I came by chance!" "I'd like an accounting of those chances, someday soon."

Tolkien himself would have loved the multi-layered depth and richness of Bujold's story. And so may you — the challenge is out. If you take it, let me know your thoughts. Copies of *The Curse of Chalion* are available in the Cathedral Bookstore.

—by Fr. Joe Behen



photos by Julie Toma and John Hornbeck

The sixth annual Dean's Cup Classic started with a Friday evening reception and silent auction. Saturday's tournament started with a rain delay but the golfers waited it out and teed off for a good cause. All proceeds will go to the Culinary Cornerstones Chef Training program.

## Activities for July

- 4 • MONDAY • Independence Day  
Cathedral Office and Buildings Closed
- 7 • THURSDAY  
9:00 a.m. Gospel Sing
- 9 • SATURDAY  
10:00 a.m. Strategic Planning Committee
- 10 • SUNDAY  
*Free blood pressure checks at coffee hour*  
2:00 p.m. Concert: Voice of Premetheus
- 20 • WEDNESDAY  
7:00 a.m. Finance Committee
- 23 • SATURDAY  
9:00 a.m. Car Boot Sale
- 27 • WEDNESDAY  
5:30 p.m. Café Grazia Dinner  
7:00 p.m. Café Grazia Small Groups

## Weekly Activities

**Holy Eucharist:** Sundays at 8 a.m., 10:15 a.m. and 5 p.m.; Weekdays at 12:05 p.m.  
**Men's Bible Study:** Thursdays at 7 a.m.

*Please verify times and dates of the events listed with the appropriate person(s) or by contacting the Cathedral office or website ([www.ghkc-kc.org](http://www.ghkc-kc.org)).*



**Grace and  
Holy Trinity  
Cathedral**  
*The Episcopal Diocese of West Missouri*

P.O. Box 412048  
Kansas City, Missouri 64141  
Telephone: (816) 474-8260  
Facsimile: (816) 474-5856  
Website: [www.ghkc-kc.org](http://www.ghkc-kc.org)  
E-mail: [office@ghkc-kc.org](mailto:office@ghkc-kc.org)

Non Profit Organization

U. S. Postage  
P A I D  
Kansas City, MO  
Permit Number 4220

July 2011						
S	M	T	W	T	F	S
					1	2
3	4	5	6	7	8	9
10	11	12	13	14	15	16
17	18	19	20	21	22	23
24	25	26	27	28	29	30
31						

The Right Rev. Martin S. Field  
*Bishop of West Missouri*

The Rev. Canon Susan Sommer  
*Priest-in-Charge*

The Rev. Canon Joseph Behen  
*Canon*

The Rev. Jerry Grabher  
*Deacon*

The Rev. Dr. Michael Johnston  
*Scholar-in-Residence*

Mr. John L. Schaefer  
*Canon Musician*

## Relief efforts in Joplin continue, how you can help

Relief efforts in Joplin will continue for the foreseeable future, long after the TV cameras and the initial flood of volunteers have picked up and left. At the June 18 Diocesan Council Meeting, a diocesan-wide plan was adopted, providing opportunities to respond financially, in material goods, and in physical labor — both skilled and unskilled.

**August 6: Free Garage Sale in the St. Phillip's Church parking lot.** Gently used household items (furniture, kitchenware, bedding), clothes, toys and "back to school" items like backpacks will be collected, taken to Joplin, and given away.

Cathedral assistance needed:

- One or more persons for general oversight to coordinate Cathedral collection of items and to coordinate transportation to Joplin.
- Depending on the response by Cathedral parishioners, may need parishioners who can drive their large vans or roomy SUVs.
- Depending on participation from elsewhere within the diocese, may need volunteers to help set up and run the day of the sale.

Depending on how well this Free Garage Sale goes, another may be held in late October for winter clothes, holiday items, household goods and the like.

**November 19: "Releaf" Joplin.** The Diocese hopes to "adopt" Cunningham Park near St. John's Hospital to plant trees. If sufficient volunteers are available, more parks in town could be added.

Cathedral assistance needed:

- One or more persons for general oversight, to coordinate Cathedral volunteer efforts.

- Donations to purchase trees (Arbor Day trees start at \$5 each; the Conservation Department offers some species for free).
- Volunteers to dig and plant
- Equipment to be lent, including shovels and post-hole diggers
- Possibility of food and beverage prep to refresh the workers

**November 19: Transitional Housing Unit Frame-in for Lafayette House.** Lafayette House is Joplin's crisis housing and support center

for women and children in domestic violence situations. Domestic violence typically soars in the aftermath of natural disasters, and Lafayette House has already experienced a massive spike in case load, some 50 percent above average and a month ahead of the predicted curve.

Cathedral assistance needed:

- One or more persons to coordinate oversight of Cathedral volunteer efforts.
- Donations to defray the cost of architect's renderings and building costs. The plans are \$700. Materials for each start in the low \$20K. Contractor-built is estimated at \$110/square foot. 2-bedroom unit is 480 square feet; 3 bedroom unit is 910 square feet. Parishioner-built would lower costs to \$30K to \$50K
- Volunteers to put up drywall, paint, roof, electrical and landscaping. Skilled and unskilled labor needed.
- Possibility of food and beverage prep to refresh the workers.

If you feel called to any of these ministries, please contact Deacon Jerry Grabher 816-590-6205 or [jgrabher@ghkc-kc.org](mailto:jgrabher@ghkc-kc.org).

